

# Installing Microsoft SQL Server 2005 Express

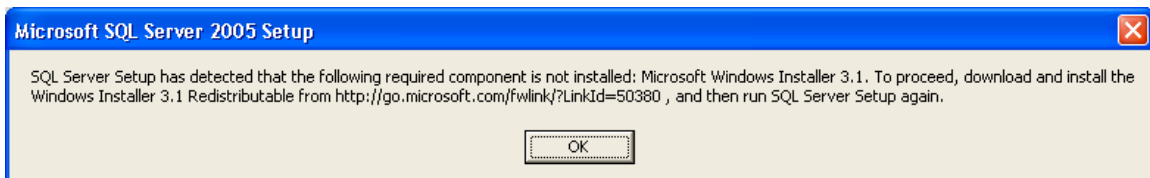
Microsoft SQL Server 2005 Express is a free download. To locate the install file, use your internet search engine to search for:

## Microsoft SQL Server 2005 Express

Locate the download link and download the install file.

Execute the installation file.

If your PC does not have the Microsoft Windows Installer 3.1 installed, the message below is displayed. If it is not installed, you will need to install it.



To find this install file, use your internet search engine to search for:

## Microsoft Windows Installer 3.1 Redistributable

Locate the download link then download and execute the install file.

Once Window Installer 3.1 is installed, re-execute the Microsoft SQL Server 2005 Express install file.

If your PC does not have the Microsoft Dot Net Framework 2 installed, you will be prompted to install this.

To find this install file, use your internet search engine to search for:

## Microsoft Dot Net Framework 2

Locate the download link then download and execute the install file.

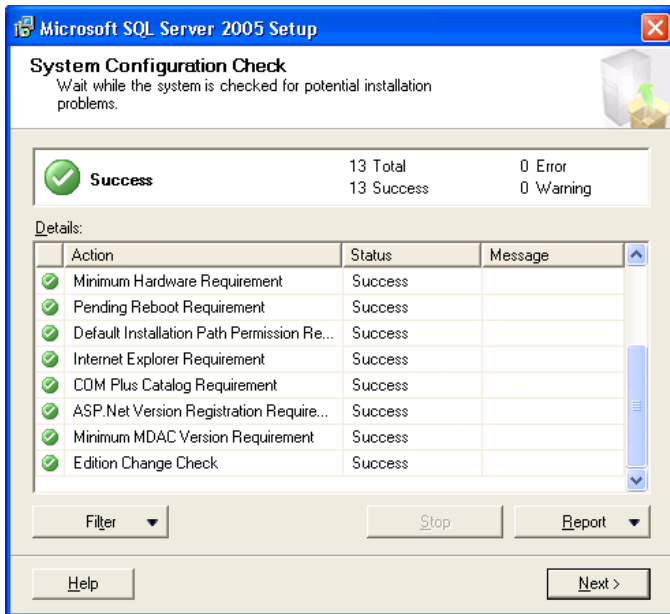
Once Window Installer 3.1 is installed, re-execute the Microsoft SQL Server 2005 Express install file.

The installation should now proceed.

Choose the defaults whenever prompted,  
**except when you encounter the dialog box labeled  
Authentication Mode.**

Here you should choose Mixed Mode

See below for examples of the dialog boxes you will encounter.



**Microsoft SQL Server 2005 Express Edition Setup**

### Registration Information

The following information will personalize your installation.

The Name field must be filled in prior to proceeding. The Company field is optional.

Name:

Company:

Hide advanced configuration options

**Microsoft SQL Server 2005 Express Edition Setup**

### Feature Selection

Select the program features you want installed.

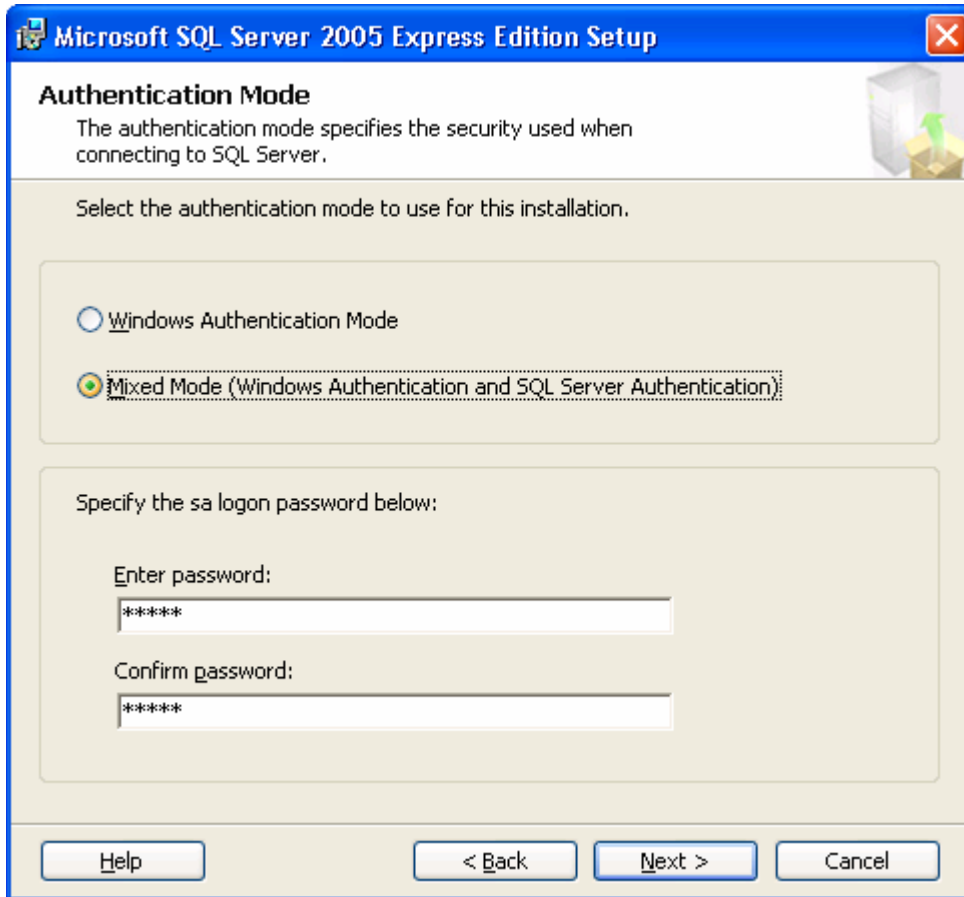
Click an icon in the following list to change how a feature is installed.

Feature	Feature description
<input checked="" type="checkbox"/> Database Services	Installs the SQL Server Database Engine, tools for managing relational and XML data, and replication.  This feature requires 117 MB on your hard drive. It has 2 of 3 subfeatures selected. The subfeatures require 99 MB on your hard drive.
<input checked="" type="checkbox"/> Client Components	
<input checked="" type="checkbox"/> Connectivity Components	
<input checked="" type="checkbox"/> Software Development Kit	

Installation path  
c:\Program Files\Microsoft SQL Server\


It is important that you choose Mixed Mode. Also, you should enter a password for the MS SQL Server System Administrator password.

You should keep note of this as you will need this when setting up dCSM.



The screenshot shows the 'Authentication Mode' dialog box in the Microsoft SQL Server 2005 Express Edition Setup. The title bar reads 'Microsoft SQL Server 2005 Express Edition Setup'. The main heading is 'Authentication Mode', with a sub-explanation: 'The authentication mode specifies the security used when connecting to SQL Server.' Below this, it says 'Select the authentication mode to use for this installation.' There are two radio button options: 'Windows Authentication Mode' (unselected) and 'Mixed Mode (Windows Authentication and SQL Server Authentication)' (selected). Below the options, it says 'Specify the sa logon password below:' followed by two text input fields. The first field is labeled 'Enter password:' and the second is labeled 'Confirm password:'. Both fields contain six asterisks (\*\*\*\*\*). At the bottom of the dialog, there are four buttons: 'Help', '< Back', 'Next >', and 'Cancel'.

After this dialog box, continue and choose defaults.

 Microsoft SQL Server 2005 Express Edition Setup

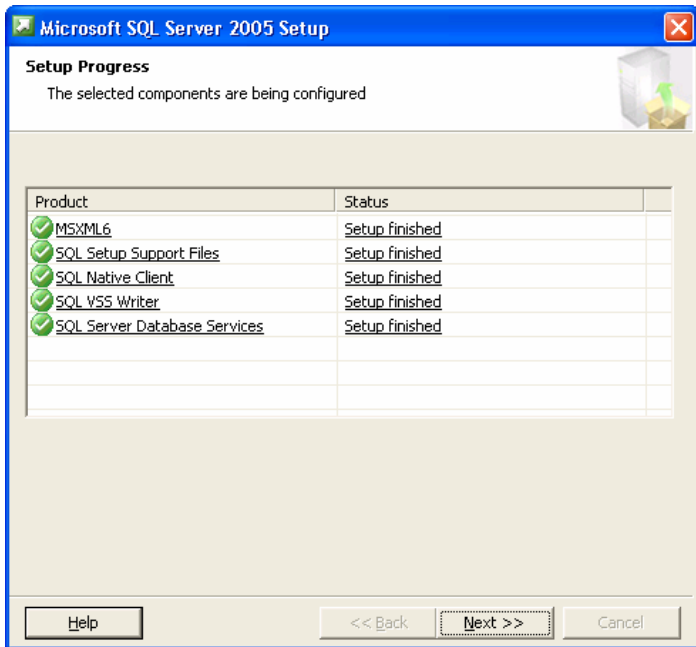
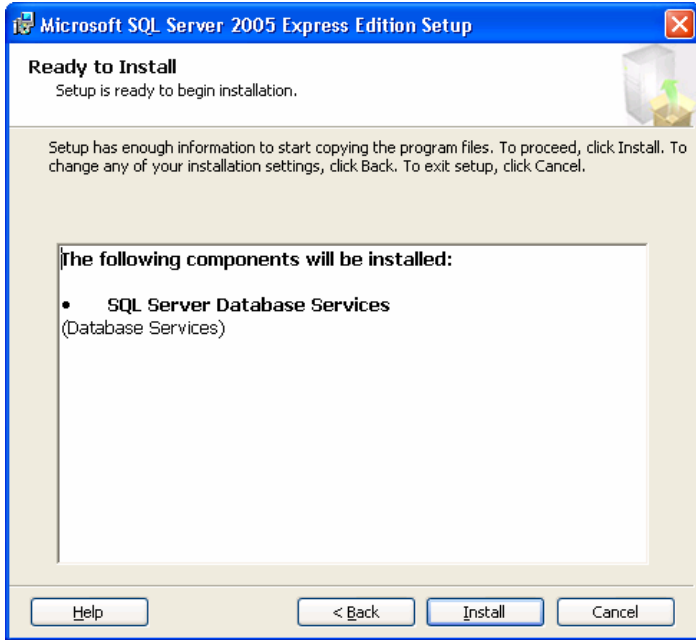
### Error and Usage Report Settings

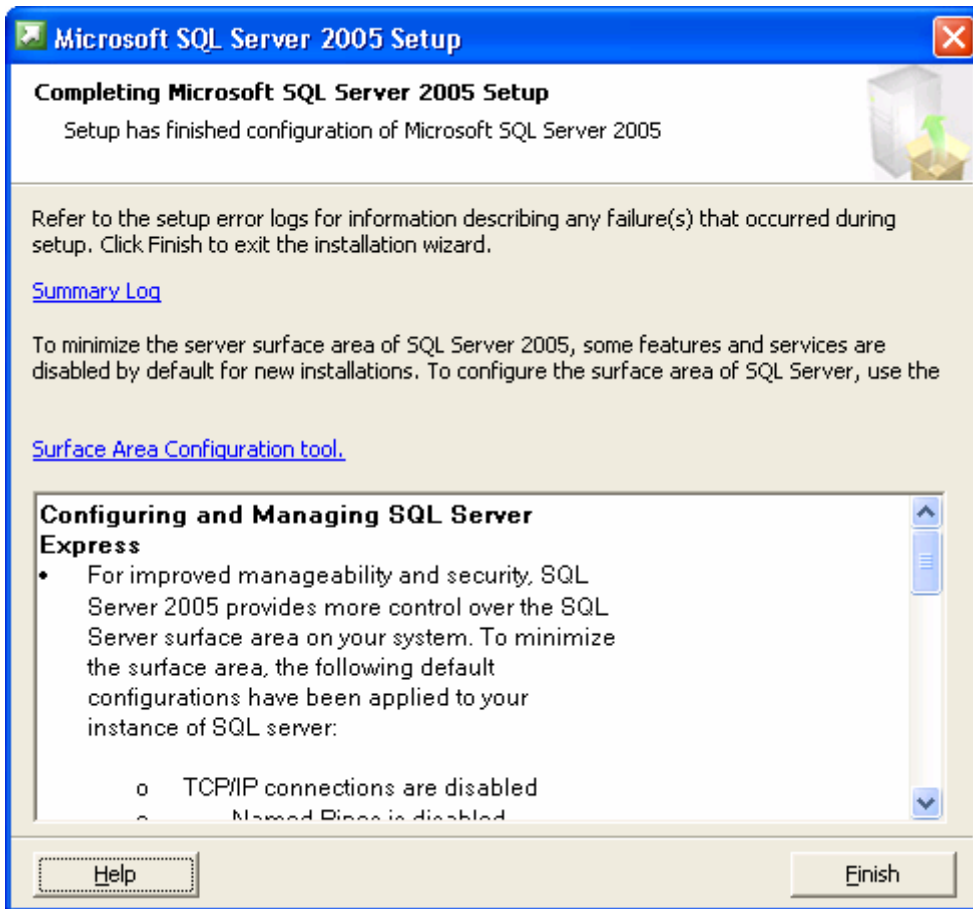
Help Microsoft improve some of the SQL Server 2005 components and services.

Automatically send Error reports for SQL Server 2005 to Microsoft or your corporate error reporting server. Error reports include information regarding the condition of SQL Server 2005 when an error occurred, your hardware configuration and other data. Error reports may unintentionally include personal information, which will not be used by Microsoft.

Automatically send Feature Usage data for SQL Server 2005 to Microsoft. Usage data includes anonymous information about your hardware configuration and how you use our software and services.

By installing Microsoft SQL Server 2005, SQL Server and its components will be configured to automatically send fatal service error reports to Microsoft or a Corporate Error Reporting Server. Microsoft uses error reports to improve SQL Server functionality, and treats all information as confidential.





Press Finish and you are now ready to install dCSM.