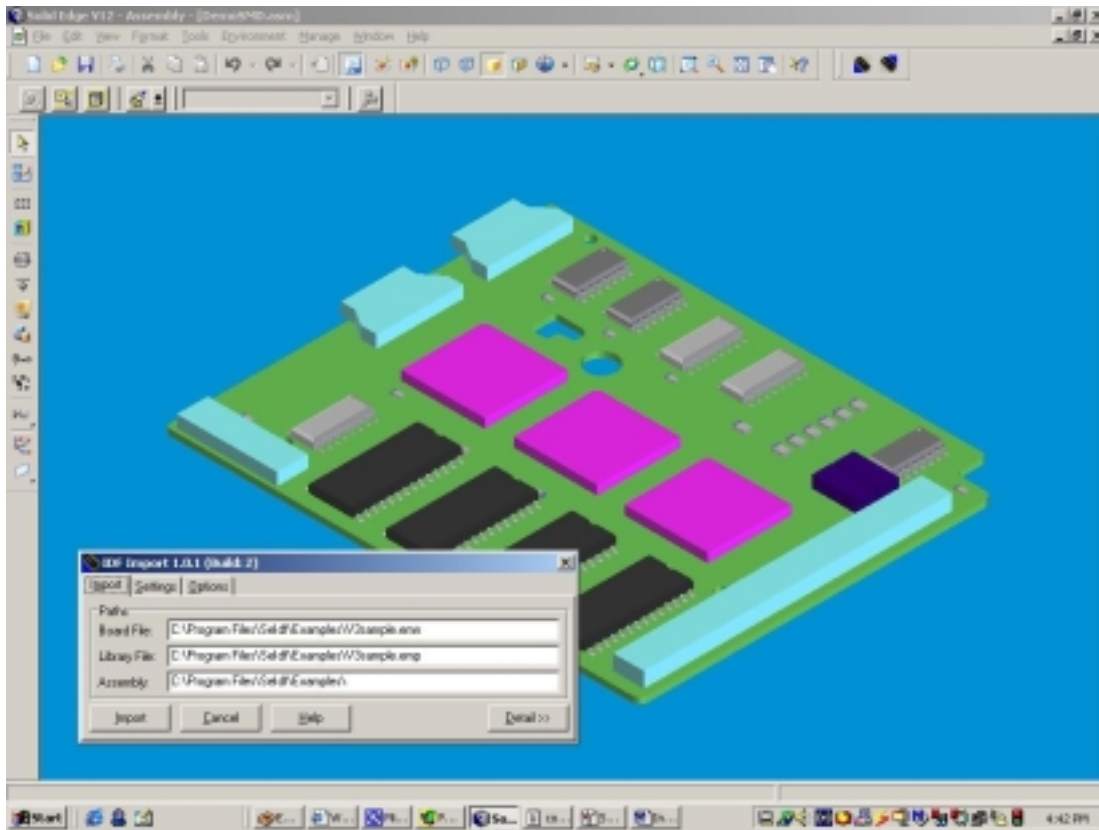


Solid Edge IDF 3D Modeler

The Solid Edge IDF 3D Modeler allows electronics designers to create a Solid Edge assembly of a Printed Circuit Board design via IDF files. This product offers a faster and more accurate alternative to using DXF to transfer data between ECAD and MCAD systems.

IDF is an industry standard supported by most PCB design systems.



Key Benefits:

- Faster and more accurate than traditional methods using DXF
- Recover the cost of this product from savings on the first project you use it on
- Reduces the cost of error correction through early detection
- Automatically creates a 3D assembly
- Unigraphics users can link to a Solid Edge PCB assembly
- Supports IDF Versions 2 and 3

desktop
EDA

Suite 26
Technology Enterprise Centre
2 Park Drive Bundoora VIC 3083
Australia
ph: +61 3 9455 2289
fax: +61 3 9479 1675
info@desktop-eda.com.au
www.desktop-eda.com.au